

# Windjammer SS

## General Mounting Instructions and Owner's Manual



© Vetter Fairing Co., Inc.  
May 1, 1977

### TABLE OF CONTENTS

INTRODUCTION . . . . .	2
NOMENCLATURE GUIDE . . . . .	3 & 4
PARTS LISTS . . . . .	5
STEP-BY-STEP ASSEMBLY . . . . .	5
TROUBLESHOOTING . . . . .	12
MAINTENANCE AND REPAIR . . . . .	13
CUSTOMER SERVICE . . . . .	14
REPLACEMENT PARTS LIST . . . . .	15
WARRANTY . . . . .	Back Cover

**SPECIAL NOTE:** To comply with federal legislation, this manual must be given to the consumer. It contains their copy of the Limited Warranty and can be useful for their future reference.

### INTRODUCTION

This manual contains important information regarding the safe operation and maintenance of your Windjammer SS. While it may appear lengthy, we urge you to read it carefully, understand all components of your fairing and follow the recommendations to obtain the most trouble-free and enjoyable operation of your fairing.

In this manual, statements preceded by the following words are of special significance:

**WARNING** means that there is the possibility of personal injury to yourself and others.

**CAUTION** means that there is the possibility of damage to the fairing and related components.

**NOTE** indicates points of particular interest for more efficient and convenient installation and operation.

We recommend that you take particular notice of these items when reading this manual.

The intent of this manual is to insure that your Windjammer SS is properly installed - PLEASE USE IT! First, we recommend that as you unpack your fairing you use pages 3, 4, and 5 to study and recognize the various parts, so you will understand the detailed assembly steps that follow. Second, we recommend that you study your Supplemental Instructions also included with the fairing, and mark in this manual at any point that requires reference to the Supplemental Instructions. The Supplemental Instructions are numbered to correlate with the numbering in this manual. If your first Supplemental Instruction is numbered 2.B.2, turn to page 7 of this manual and note that reference to

the Supplemental Instructions is required while making the electrical hook-up. Working straight through the manual in this way will assure that nothing is overlooked or forgotten.

As you are following the instructions, double check the following points as they are critical:

1. Carefully check wiring color codes.
2. If you have safety bars, check carefully to determine if they are compatible with this fairing mounting system.
3. Always install rubber washers between steel washers and the fairing.
4. Check for clearance and tighten all bolts before operating your motorcycle with the newly installed fairing.
5. Periodically check and retighten all bolts after installation.

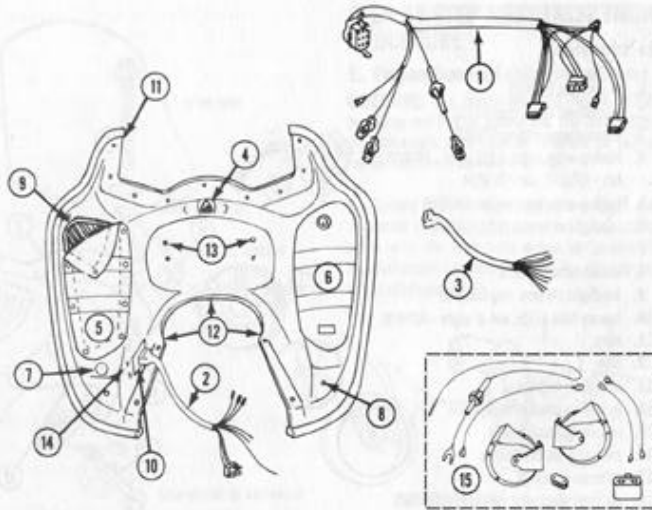
We thank you for purchasing a Vetter Fairing Company product, and we ask that you exercise care and safety in its use. We sell only quality products, and we stand behind the quality of our products.

Enjoy your fairing.

## NOMENCLATURE

### Interior View

1. internal wiring harness DA0016
2. external wiring harness (W/J SS type) DA0015
3. external wiring harness (W/J III type) DA0004
4. headlight adjustment knob
5. pocket tonneau GG0009
6. locking tonneau GG0007
7. cigarette lighter hole plug AD0014
8. lower mounting hole
9. pocket edging AC0002
10. serial number plate
11. ear
12. horseshoe
13. horn mounting holes
14. horn relay mounting holes
15. horn option kit GB0002



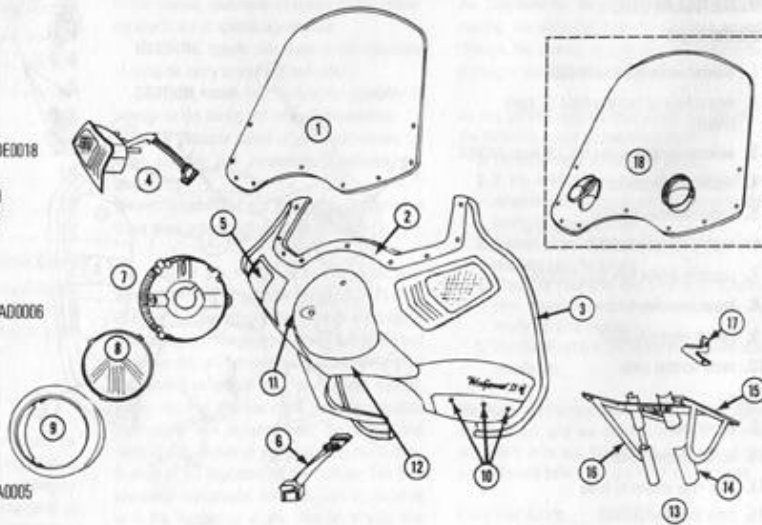
Contact your local Vetter dealer to purchase or order replacement parts.

3

## NOMENCLATURE

### Exterior View

1. windshield BA0010
2. windshield foam tape AE0001
3. chrome vinyl edging GF0006
4. leading edge lights (LEL) right - DE0018  
left - DE0017, set - DE0014
5. leading edge light socket DA0019
6. headlight extension plug DA0018
7. headlight nacelle
8. sealed beam DB0002
9. headlight chrome ring DB0018
10. lowers hole plugs, set of eight - AD0006
11. nose
12. chin
13. mounting bracket
14. mounting bracket backplates
15. mounting bracket rails
16. mounting bracket tubes
17. reflector brackets
18. optional snap vent windshield BA0005



4

Contact your local Vetter Dealer to purchase or order Genuine Vetter Replacement Parts.

**PARTS LIST**  
**DESCRIPTION**



bolt (16 x 35mm)

steel washer (16 x 22mm)

rubber washer (16 x 22mm)

locknut (M6)



ny-strap



1/4" nylon bolt



brass grommet



1/4" nylon flat washer



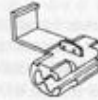
No. 10 nylon flat washer



6-32 steelnut



mounting clamp



blue electrical connector

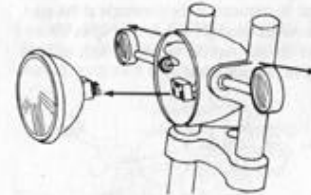
Specific parts may vary due to different requirements for different motorcycles.

**STEP BY STEP ASSEMBLY**  
**PROCEDURE**

**1. Preparation for Fairing Installation:**

**OBJECTIVE:** The Windjammer SS has a built-in headlamp and built-in turnsignals. The corresponding motorcycle parts must be removed for wiring connections and mounting clearance.

**A.** Remove your motorcycle headlamp. Check the wire color code in your motorcycle. If it does not agree with the color code noted in the Special Supplementary Instructions, note the change for future reference.



**B.** Disconnect the right and left turnsignal wires. Unbolt and remove the complete turnsignal assemblies.

**C.** Unless front reflectors are mounted on the lower portion of the forks, where they won't be obscured by fairing installation, they must be removed from the motorcycle and reinstalled when the fairing is installed in step 4.

**D.** If the turnsignal units were used to hold the headlight nacelle, use the bolts and nuts provided by Vetter to hold the nacelle in place.

**2. Electrical Connections**

**OBJECTIVE:** Part of the motorcycle's electrical equipment has been removed to be replaced by fairing components. The Windjammer wire harness must be connected to the motorcycle at this point. Besides the headlight and running lights, connections are also required for options such as horns and the cigarette lighter.



**A.** Route external harness into the back of the headlamp nacelle (Honda GL 1000 is different. See Special Supplementary Instructions.)

**B.** Using the color code provided in the Supplementary Instructions, make the electrical connections as follows. For most Japanese motorcycles (except Honda GL 1000) and some pre 1974 models:

1. Plug male Vetter headlight connector into the motorcycle headlight plug.
2. Plug male Vetter bullets into appropriate motorcycle female connectors. Gently pull all connectors to make sure they are tight. If not, crimp the outside of the connectors with wire crimpers or pliers after the connection is made.

For Honda GL1000, some pre 1974 Japanese models, BMW, Harley Davidson and all European motorcycles:

Use the blue connectors for connecting the wire harness into the motorcycle electrical system.

**C.** Two wires on the Windjammer harness (brown and orange) can be used for accessories except with the horn option installed (see horn option instructions). Before making use of these extra connections for lighting or other accessories, be sure that your motorcycle battery will not be drained by extra current demand.

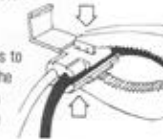
**D.** Install the black Vetter headlamp nacelle cover. Use black electrical tape to secure the cover to the nacelle. The motorcycle headlamp is not usually replaced. However, if your Supplementary Instructions direct you to reinstall your headlamp, do so after using black electrical tape over the male headlamp connectors.

**SPECIAL BLUE CONNECTOR INSTRUCTIONS**

**A.** Snap the Vetter blue connector over the appropriate bike wire.



**B.** Insert the appropriate Windjammer SS wire into the hole on the right side of blue connector. The wire will not go all the way through the connector.



**C.** Squeeze the metal tab down onto the wires to make the connection. The metal tab must be flush with the top of the blue connector.

D. Lock the blue connector by folding the flexible plastic tab down until it snaps closed.

E. Pull gently to test for a secure connection.

F. If necessary to correct the wiring, do so by un-snapping the lip of the blue connector and, using pliers, removing the metal tab. After checking the wires, reinsert the metal tab and snap shut the blue connector.

#### SPECIAL HORN OPTION INSTRUCTIONS

A. Locate motorcycle horn, disconnect both lead; and remove horn from motorcycle. Cover horn connector wires with electrical tape.

B. Using the packaged, fused brown wire, secure with electrical tape along the top frame and route it from the battery to the motorcycle nacelle (Honda GL1000 - left side shelter). Do NOT connect to battery yet.

1. Japanese motorcycles, using Windjammer SS type external harness (see page 4 for identification): Plug Windjammer brown wire into the receptacle on the brown fuse wire.

2. Honda GL1000, some pre 1974 Japanese models, Harley Davidson and all European

motorcycles using Windjammer III type external wiring harnesses (see page 3 for identification): Strip 3/8" of insulation from end on brown wire and crimp provided bullet on it. Plug bullet into receptacle on brown fused wire.

C. Connect brown wire to power side of battery. **NOTE:** Make sure brown wire insulation is not crimped or damaged.

D. Using the color code from the Supplementary Instructions, connect Windjammer SS orange wire to the motorcycle horn switch wire with a blue connector.

#### 3. Mounting Bracket Installation

**OBJECTIVE:** The Windjammer SS is designed to fit a large number of different motorcycles. To do this requires that each motorcycle have a specially designed mounting bracket. When installed properly, the bracket will locate the fairing at the proper height and fore and aft location for your bike. If you have safety bars, refer to the special section titled "Special Safety Bar Instructions" for special information. The successful operation of the fairing and your happiness with it are dependent upon the

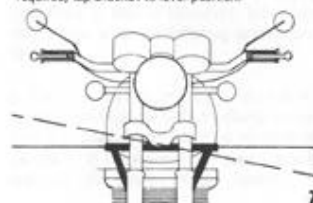
mounting. Use all the hardware specified and periodically check for tightness after installation.

A. Raise the bracket up between the motorcycle frame and front wheel, then position it on the frame downtubes below the steering head.



B. Secure the bracket loosely to the frame members with the mounting clamps.

C. Check bracket for horizontal alignment by viewing it from in front of bike. If adjustment is required, tap bracket to level position.



D. Stand on footpegs. Check bracket for centering with the bike and adjust as necessary. This is done by turning the handlebars left and right, and tapping the mount until the spaces between the forks and side rails of the hardware are equal. When complete, be sure to recheck horizontal alignment.

E. Tighten all mounting clamps.

#### WARNING:

**THE PRIME CAUSE OF WINDSHIELD BREAKAGE, FAIRING AND HARDWARE FAILURE IS LOOSE HARDWARE.** For your own protection, use all provided mounting clamps and check them periodically for tightness.

#### SPECIAL SAFETY BAR INSTRUCTIONS

**BEFORE MOUNTING YOUR WINDJAMMER HARDWARE WITH A SAFETY BAR, CHECK TO SEE THAT THE MOUNTING BRACKET CAN BE POSITIONED SECURELY ON THE FRAME WITHOUT INTERFERENCE FROM THE SAFETY BAR:**

1. Mark the position of the upper safety bar mount against the motorcycle frame.
2. Remove the safety bar and position the mounting hardware on the frame. The mounting hardware should clear all marks that locate the upper safety bar mount.

**IF IT IS OBVIOUS THAT THE MOUNTING BRACKET AND SAFETY BAR CANNOT BE USED TOGETHER, DO NOT ATTEMPT TO MOUNT THE FAIRING WITH THE SAFETY BAR.**

If there is no apparent interference, continue with the appropriate section.

#### OPEN LOOP TYPE SAFETY BARS

1. Thread the safety bar through the side loops of the mounting bracket.
2. Proceed with the standard mounting bracket installation-step 3.



#### CLOSED LOOP TYPE SAFETY BARS

Closed loop safety bars can be used on the following motorcycles only if the mounting hardware does not have to be modified.

Honda GL 1000  
Kawasaki KZ 650  
Moto Guzzi - All  
Suzuki GS400, GT 380/550, GT750, GS750, RE5  
Yamaha 650, XS750  
Triumph T150, T160

Cutting any part of the mounting bracket for these motorcycles and those noted in the Special Supplementary Instructions will result in structural damage to the fairing, and mounting bracket failure.

For other motorcycles, closed loop safety bars can be installed with the Windjammer SS providing a safety bar kit is used.

**WARNING:** Without the safety bar kit, structural damage to the bracket and, subsequently, to the fairing will result.

After having:

1. Checked to assure your bike is not on the above list or noted in the supplementary instructions;
2. Checked to verify that there is no interference;
3. Obtained a safety bar kit, proceed with the following instructions:

a. Make cutouts between crossmember and the rear tube weld joint. Cut spaces in the mounting bracket rails slightly larger than the diameter of the safety bar.

b. Slip the safety bar through the cutouts made in the bracket.



c. Place the adapter plate on top of the hardware rail and tape them together to prevent them from sliding off later.



d. Proceed with the standard mounting bracket installation step 3.

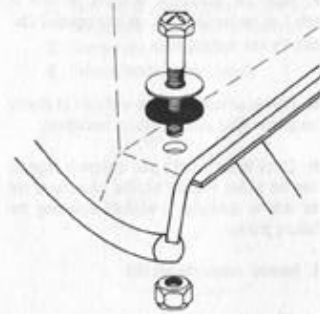
#### 4. Installing the Windjammer

**OBJECTIVE:** Once the bracket is securely attached to the motorcycle, the fairing is ready to be installed. The important item to remember is that rubber washers should always be installed between steel washers and the fairing.

A. Remove the motorcycle gas tank to prevent damage during installation.

B. Install a steel and a rubber washer on each of the four mounting bolts. Be sure that the steel washer is against the bolt head and the rubber washer in contact with the fairing.

C. Set the fairing on the mounting bracket, install mounting bolts through the two rear holes and install locknuts on the bolts.



D. Before tightening the nuts, plug the external wire harness into the fairing at the serial number plate. Check all electrical components before continuing. Refer to the troubleshooting section if problems arise.

E. Insert two front mounting bolts. Before installing the locknuts on the bolts, a reflector bracket must be installed on each side of the fairing. Make sure the "L" of the bracket is up. Tighten mounting nuts with the brackets straight forward.

9

F. Install the motorcycle reflectors removed in step 1 on the brackets with the nuts provided. Discard the two nuts not used.

G. Tighten all mounting bolts sufficient to slightly compress rubber washers. Do not overtighten.

H. Check to see that the plug is properly engaged into the socket. Properly installed, you should not be able to disengage it without depressing the locking prongs.

I. Reinstall motorcycle gas tank.

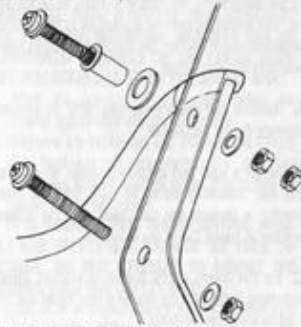
#### 5. The Windshield Installation

**OBJECTIVE:** A properly installed windshield is essential for the safe use of the fairing. The windshield bolts are nylon; overtightening will result in bolt failures. Please note that the top two windshield bolts require brass grommets, large washers and a second locking nut.

A. Using a nylon bolt, puncture the foam tape at each of the windshield bolt holes. Position the windshield on the fairing.

10

**NOTE:** For reasons of structural strength, the windshield must be "preloaded" before the top bolt holes will line up.



B. For the top two windshield bolts:

1. Slide the brass grommet onto the nylon bolt.
2. Slide the large nylon washer onto the bolt and grommet.
3. Insert bolt and grommet through windshield and fairing hole.
4. Slide a small nylon washer onto bolt.
5. Install a nut on the bolt but do not tighten yet.
6. Install a second, locking nut on the bolt.

C. For the remaining seven windshield bolts:

1. Insert nylon bolt through windshield and fairing.
2. Slide a small nylon washer onto bolt.
3. Install a nut on the bolt but do not tighten yet.

D. Tighten the bolts starting with the center bolt and working out to the top bolts.

**WARNING:** Failure to install the windshield properly and maintain bolt tightness may result in windshield cracking. If the windshield ever becomes cracked, it should be replaced for safety reasons.

#### 6. Final Adjustments

**OBJECTIVE:** The Windjammer SS is now installed but several details must be attended to before the installation is complete. **FINAL CLEARANCE ADJUSTMENT, IF NEGLECTED, COULD RESULT IN DANGEROUS INTERFERENCES DURING USE OF THE FAIRING AND MOTORCYCLE. FOR YOUR SAFETY, MAKE ALL NECESSARY ADJUSTMENTS BEFORE USING THE NEWLY INSTALLED FAIRING.**

**A.** Check clearances with the fairing and windshield installed to be sure that your headlight nacelle does not rub, that your front brake lever does not engage when turned to full lock positions and that the external wiring harness does not catch anywhere on the bike or fairing when the handlebars are turned. If any of these problems arise, the following steps should solve them:

1. For clearance at the headlight nacelle, tilt the headlight for maximum clearance. If the nacelle is still hitting in that position, remove the bolts that hold the headlight nacelle and move it farther back by replacing the bolts with provided smaller diameter bolts. Finally, on some motorcycles, it may be necessary to remove the headlight nacelle completely. If you find that this is necessary, be sure to tie the wires from the nacelle between the forks as high as possible to avoid damaging them.
2. Adjust your motorcycle's handlebars and mirrors, if necessary, to provide clearance for maximum turning radius. Loosen the bolts that hold the handlebars and rotate the handlebars toward the motorcycle, check clearance then retighten bolts.

#### B. Headlight Adjustments

1. Vertical - The Windjammer SS has been designed with an adjustable headlight for vertical positioning. The knob located in the center of the dash allows vertical positioning of the beam from the seat of the motorcycle. Readjustment may be necessary when carrying passengers or luggage. Do not adjust the headlight while operating motorcycle.

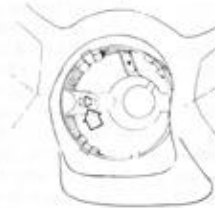
#### 2. Horizontal adjustment

a. Remove the headlamp as follows:

1. Insert screwdriver in screwdriver slot located behind bottom of ring and push spring up (1/8") until it disengages from ring.



2. Turn ring counterclockwise to full unlock position and remove screwdriver.
3. Remove ring from nacelle.
4. Remove headlight from nacelle.



- b. Loosen bolt on left side of nacelle until nacelle is just free to slide fore and aft.
- c. Reinstall headlamp and position nacelle for proper left to right beam position.
- d. Carefully remove headlamp without disturbing the nacelle position.
- e. Tighten nacelle bolt to lock aim at that position.
- f. Reinstall headlamp.

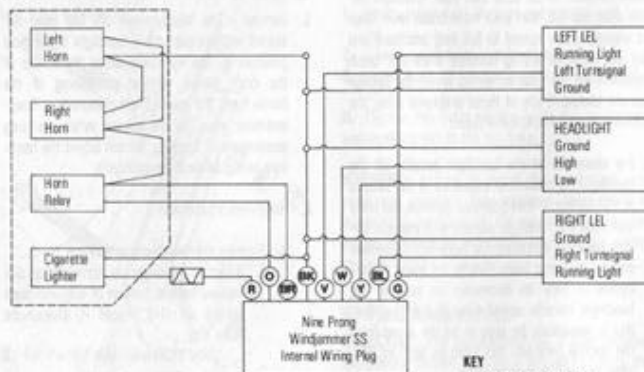
11

## TROUBLESHOOTING & SPECIAL INSTRUCTIONS

### ELECTRICAL

If your problem is electrical, first, check your color code to insure the proper wires have been connected. If your colors check out, the next step is to check the blue electrical connectors or bullet connectors (depending on your model bike) for good contact. This is done by reversing the steps to connect them. Unsnap the lip of the blue connector, using pliers, remove the metal tab. Check both wires to see if the tab cut through the insulation and to the wire itself. Reinsert the wires. A loose bullet connector connection can be improved by unplugging the connector and making the female receptacle smaller by use of pliers and then reinstalling the bullet connector. A bad connection on your ground is easily diagnosed. If no power is getting to the fairing, check to see that the external wiring harness is making a good connection to the fairing's plug. If still no power is getting to the fairing, check the motorcycle's fuses and consult the motorcycle's owner's manual for determining cause of fuse failure before replacing fuse. If your headlamp is weak and your turnsignals don't function properly, your ground is probably not making good contact. If your motorcycle battery does not maintain a good charge after installing the fairing,

it may be that the bike's charging system can not keep up with the loads imposed by the electrical options of the fairing. Consult your dealer to determine which options are not recommended for your model motorcycle. If there are any other problems that can not be solved by you or your dealer, contact the Customer Service Department of Vetter Fairing Company (217) 833-5300.



#### KEY

- G - Green - Running Lights
- BL - Blue - Right Turnsignal
- Y - Yellow - Low Beam
- W - White - High Beam
- V - Vider - Left Turnsignal
- BR - Black - Ground
- BR - Brown - Horn Power or accessory
- O - Orange - Horn Switch or accessory
- R - Cigarette Lighter

3 amp slow blow fuse

----- options

12

### MOUNTING

The best answer for almost any problem is to re-read your instructions carefully. If, when mounted, your headlamp nacelle rubs your fairing, either the nacelle is not adjusted back far enough or it is not tilted at the proper angle. Brackets which do not bolt to the motorcycle frame may require up or down adjustment for a proper fit.

If problems arise in mounting the windshield, don't panic. The windshield fits correctly if the proper procedures are followed. In the step-by-step assembly, the proper sequence for installing the nylon bolts is given. Also, for reasons of structural strength, the windshield must be "preloaded" before it will fit properly.

### TONNEAU COVERS

The pocket flap's double snaps are directional which necessitates that the cover be removed from the top down and put on from the bottom up. Care should be taken when removing the pocket tonneau cover so as not to pull the snaps out of the fairing or the cover itself.

The locking tonneau cover must not be removed while operating the motorcycle. If the cover is too snug or too loose, bend the lock blade to achieve the desired fit.

### MAINTENANCE AND REPAIR

The Windjammer SS requires little maintenance, but we recommend that you do make periodic checks. The mounting clamps, mounting bolts, and the windshield bolts should be checked for tightness and adjustments made as necessary.

### Cleaning and waxing the fairing and windshield:

When washing your fairing, use a mild detergent and warm water. Washing should be done with a soft cloth or a sponge. Wash the windshield with the same solution, being careful not to rub or scratch the surface. Waxing the fairing is easy; Pledge furniture polish works as well as anything we have found. To finish cleaning the windshield, a Plexiglas cleaner and polisher should be used. Do not use cleaners which contain methyl or ethyl alcohol. Soft flannel cloth is best for the job.

### STRUCTURAL REPAIR

Structural damage to the Windjammer SS may be repaired by using a Hotcho Fix Kit, available through your dealer. The Hotcho Fix Kit includes Resin and Cream Hardener, plastic fairing material, stir sticks and instructions for using the kit. Regular automotive body putty can be used to prepare the surface of the fairing for painting.

Because certain substances can attack the fairing body and cause it to deteriorate, we do not advise using any materials other than the Hotcho Fix Kit and the automotive body putty.

**CAUTION:** Hydraulic fluid will attack your Windjammer. NEVER allow it to come into contact with your fairing.

13

## TROUBLESHOOTING & SPECIAL INSTRUCTIONS (CON'T)

### PAINTING INSTRUCTIONS

If you desire to repaint your fairing, we recommend that the following instructions be taken:

1. Remove the Windjammer SS/logo decal and stripes.
2. Sand thoroughly with 220 grit wet sandpaper.
3. Resand with 400 grit wet sandpaper.
4. Dry thoroughly.
5. Spray with DuPont 100S Multi Purpose Primer.
6. Spray DuPont Weight Lifter Acrylic Enamel with 7825 hardener.
7. Reinstall vinyl decals.

### IMPORTANT DRILLING INSTRUCTIONS

When drilling holes in your Windjammer fairing to mount accessory lights, brackets, etc., be sure to pad each side of fairing shell with an oversize rubber washer first, then regular steel washers.

**FAILURE TO FOLLOW THIS PROCEDURE CAN RESULT IN FAILURE AT THE MOUNT HOLE.**

### REMOVAL OF WINDJAMMER STRIPING

When removing striping from the Windjammer, it may be helpful to wipe the striping surface freely with vinegar which has been heated just to boiling point.

After leaving the surface to dry for a few minutes, the striping should become brittle and chip off.

Repeat the procedure until all striping is off.

**NOTE:** When removing striping always be careful not to scrape or chip the paint under and around the striping.

### HANDLING OF WINDJAMMER STRIPING

When handling Windjammer SS striping, do not crease or bend it.

Always handle striping from the edges never from the ends.

Do not pull the backing paper off the striping with expectations of reapplying. Backing paper will NOT restick.

### QUARTZ HEADLIGHT

When handling the quartz bulb, handle by the base only. Do not touch the glass, as this can cause premature failure. If the bulb gets touched, clean using isopropyl alcohol with clean cotton.

If you have any questions on storing, handling, removal or applying of Windjammer SS striping, contact our Customer Service Department.

### TOWING

When trailering or towing your motorcycle it is advised that you remove the windshield from the fairing.

### REPLACEMENT PARTS

We recommend that you always use Genuine Vetter Replacement Parts. Contact your local Vetter dealer to purchase or order replacement parts.

### CUSTOMER SERVICE

Any problems concerning installation or modification of the fairing should be referred to your dealer or the Customer Service Department, Vetter Fairing Company. We are here to serve you: 217-883-8300. In order to comply with consumer legislation and to provide the maximum amount of service to you and the dealer, it is necessary that you fill out the Owner's Registration Card and promptly return it to Vetter Fairing Company.

14

PRODUCT NUMBER      PRODUCT NAME  
**WINDJAMMER SS RELATED PRODUCTS**

DB0023 BMW Headlight Nacelle Assembly (W/D Light and Adj. Mech.)  
 GB0001 Cigarette Lighter  
 AD0014 Cigarette Lighter Plug Button  
 EC0037 Decal Set - BL WJSS  
 EC0036 Decal Set - WH WJSS  
 GF0006 Edging - Chrome Kit  
 AC0002 Edging - Pocket - One Side  
 AD0006 Fajing Plug Button for Lowers - Eight  
 CD0018 Headlamp Adjustor Kit  
 DB0019 Headlamp Nacelle Assembly (W/D Light and Adj. Mech.)  
 CZ0003 Headlamp Cover 7.25  
 CZ0014 Headlamp Cover 7.25  
 DB0018 Headlamp Outside Chrome Rim  
 DB0008 Headlamp - Quartz Sub  
 DB0005 Headlamp - Quartz Complete  
 DB0009 Headlamp - Quartz Reflector  
 GB0002 Headlamp - Sealed Beam 12 V  
 GB0003 Horn - Left - Low Tone  
 GB0005 Horn Relay  
 GB0004 Horn - Right - High Tone  
 GB0002 Horn Set Complete  
 GF0004 Hotchu Fix Kit - Fajing  
 AE0009 IEL Gasket Kit  
 DE0017 IEL Left Kit  
 DE0014 IEL Package Complete  
 DE0018 IEL Right Kit  
 GG0007 Locking Tonnenu

GG0009 Pocket Tonnenu  
 CC0001 Safety Bar Adapter Kit  
 BZ0012 Snap Vent Kit  
 HJ1263 Striping - Blue/White/Black  
 HJ1123 Striping - Gold/Blue/Black  
 HG2113 Striping - Gold/Gold/Black  
 HG2114 Striping - Gold/Gold/Orange  
 HG2115 Striping - Gold/Gold/Red  
 HJ1173 Striping - Gold/Light Green/Black  
 HJ1143 Striping - Gold/Orange/Black  
 HJ1145 Striping - Gold/Orange/Red  
 HJ1153 Striping - Gold/White/Black  
 HJ1562 Striping - White/White/Blue  
 CD0023 WJSS Reflector Bracket Kit  
 EB0001 WJ Vetter Nameplate Kit  
 BA0010 WJ Windshield  
 BA0006 WJ Windshield W/ Snap Vent Holes Only  
 BA0005 WJ Windshield W/ Snap Vents  
 BA1010 WJ X-Tall Windshield Piece  
 BA1006 WJ X-Tall Windshield Vent Holes Only  
 BA1005 WJ X-Tall Windshield W/ Snap Vents  
 AE0001 Windshield Foam Tape Set  
 BR0002 Windshield Nylon Roll Kit  
 DA0015 Wiring Harness External - WJSS Type  
 DA0004 Wiring Harness External - WJH Type  
 DA0016 Wiring Harness Internal - WJSS

GZ0012 Hippo Hands - Pair  
 16AA01 Instrument Module  
 16AA02 Plain Face Module

Contact your local Vetter Dealer to purchase or order Genuine Vetter Replacement Parts.

PRODUCT NUMBER      PRODUCT NAME  
**WINDJAMMER LOWERS ACCESSORIES**

GF0007 Edging - Lower - Chrome Kit - One side  
 CD0006 Lower - Hardware Bag W/ Bung Cord  
 AD0114 Lower Plug Button (BL Plastic)  
 HN0063 Lower Striping - Blue/White/Black  
 HM0123 Lower Striping - Gold/Blue/Black  
 KH0113 Lower Striping - Gold/Gold/Black  
 HL0113 Lower Striping - Gold/Gold/Black (BMW Only)  
 HL0114 Lower Striping - Gold/Gold/Orange (BMW Only)  
 HK0115 Lower Striping - Gold/Gold/Red  
 HM0173 Lower Striping - Gold/Light Green/Black  
 HM0143 Lower Striping - Gold/Orange/Black  
 HM0145 Lower Striping - Gold/Orange/Red  
 HM0163 Lower Striping - Gold/White/Black  
 HL0062 Lower Striping - White/White/Blue (BMW Only)  
 GZ0010 Lower Switch A-Switch Kit

GZ0005 Totes - X Small (High Top Version, 6-7 1/2)  
 GZ0008 Totes - Small - Pair (8-9)  
 GZ0007 Totes - Medium - Pair (9 1/2-10 1/2)  
 GZ0008 Totes - Large - Pair (11-12 1/2)  
 GZ0009 Totes - X Large - Pair (13-14)

EZ0001 Vetter Shoulder Patch - One  
 GZ0014 Vetter Sweat Shirt - Small (Top Quality)  
 GZ0015 Vetter Sweat Shirt - Medium  
 GZ0016 Vetter Sweat Shirt - Large  
 GZ0017 Vetter Sweat Shirt - X-Large  
 GZ0001 Vetter T-Shirt - Small (Top Quality)  
 GZ0002 Vetter T-Shirt - Medium  
 GZ0003 Vetter T-Shirt - Large  
 GZ0004 Vetter T-Shirt - X-Large  
 EC0019 Vetter Truck Decal - One

15

Specifications subject to change without prior notice.

**LIMITED WARRANTY  
 VETTER FAIRING COMPANY  
 PRODUCTS**

This Warranty applies to products manufactured or distributed by Vetter Fearing Company, Rantoul, Illinois, 61866, and sold by Vetter Fearing Company or its authorized dealers within the United States, Puerto Rico, and the Virgin Islands. It is given to the first retail purchaser only and is not transferable to subsequent owners.

**Warranty Obligation:** Vetter Fearing Company warrants that it, or one of its authorized dealers, will repair or, at its option, replace any part proven to be defective in factory material or workmanship within six (6) months (unlimited mileage) of the date of purchase. Parts repaired or replaced under this warranty are warranted only during the balance of the original warranty period. THIS WARRANTY DOES NOT INCLUDE ANY LABOR CHARGES FOR TROUBLESHOOTING, REMOVAL OR INSTALLATION.

**Exclusions from Coverage:** 1. Any repairs or replacements of parts necessitated by misuse, negligence, fire, accident, damage caused by exposure to gasoline, brake fluid, harmful solvents and cleaners, paints, or repair material, use of un-

authorized accessories, faulty installation, installation upon motorcycles or vehicles not listed in Vetter Fearing Company's retail and dealer catalog sheets, or improper or unreasonable maintenance are not covered. 2. This warranty does not cover "Totes" rainboots.

**DISCLAIMER OF CONSEQUENTIAL DAMAGES AND LIMITATIONS OF IMPLIED WARRANTIES: TO THE EXTENT THE LAW PERMITS, VETTER FAIRING COMPANY SHALL NOT BE LIABLE UNDER ANY CIRCUMSTANCES FOR LOSS OF USE OF THE FAIRING, CONSEQUENTIAL OR INCIDENTAL DAMAGES. ANY IMPLIED WARRANTY ARISING UNDER LAW, INCLUDING THOSE OF MERCHANTABILITY AND FITNESS FOR A PARTICULAR PURPOSE, IS LIMITED TO THE DURATION OF THIS LIMITED WARRANTY.**

**IMPORTANT:** Some states do not allow limitations on how long an implied warranty lasts and/or limitations or exclusions of consequential or incidental damages, so the above limitations may not apply to you.

**To Obtain Warranty Service:** Information you must provide when filing claim: 1. Name, mailing address and telephone number. 2. Selling dealer's name and address. 3. Serial number of the product. 4. Model and year of motorcycle. 5. Date product was purchased. 6. Date and mileage at failure. 7. Description of problem.

**Steps to take:** 1. Contact or take your product to an authorized Vetter dealer (preferably your selling dealer) at your expense. 2. If you are unable to obtain warranty service, or should your warranty claim be denied for reasons that you consider unjustifiable, contact the owner of your selling dealer. Normally, this should resolve your problem. However, if you require further assistance, write or call the Customer Service Department of Vetter Fearing Company, Rantoul, Illinois, 61866, Phone: (217) 853-9300. At this point, you must be prepared to return the part in question to Vetter Fearing Company with all freight charges prepaid. The charges will be reimbursed to you if they total over \$5.00 (five dollars) and the warranty claim is honored.

This warranty gives you specific legal rights and you may also have other rights which vary from state to state.

January 1, 1977  
 Vetter Fearing Company, Inc.