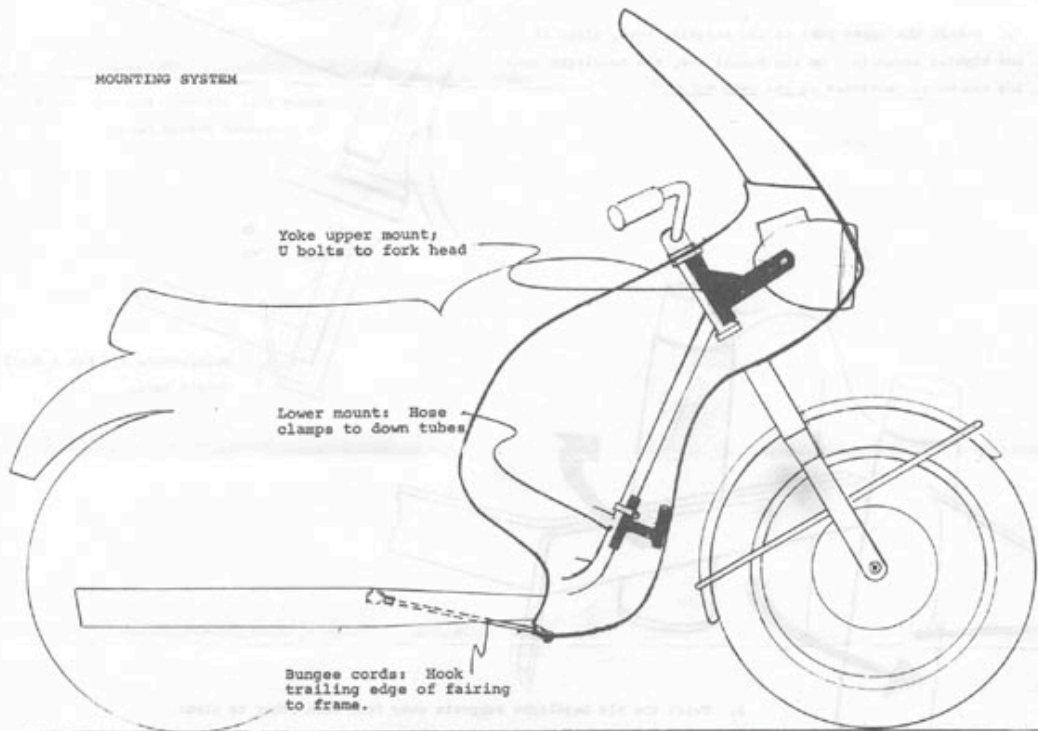


# Mounting Instructions

The Vetter Windscreen has been carefully designed to complement the performance and appearance of your machine. Study and follow these instructions. It should take less than half an hour to mount your fairing.

**Important:** Because of the high speeds of which this fairing is capable, the instructions must be followed. A considerable amount of time and engineering has been applied to the fairing and it's system of mounting. Your safety depends upon your ability to properly fit it to your machine.

## MOUNTING SYSTEM



On the Yamaha only, the lower edge of the bracket is supported behind the lock bracket.

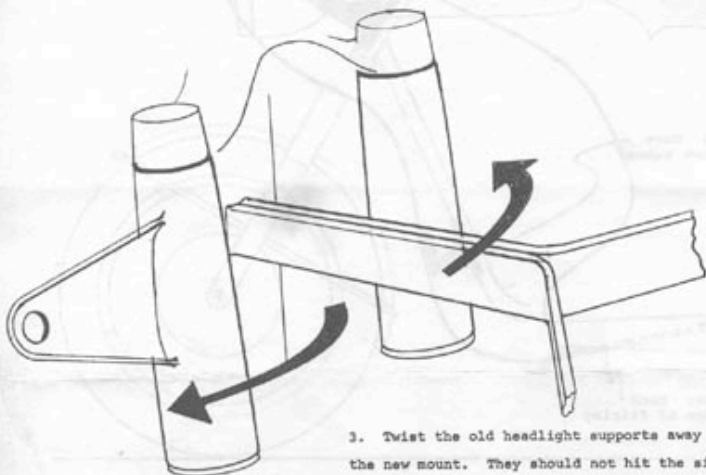
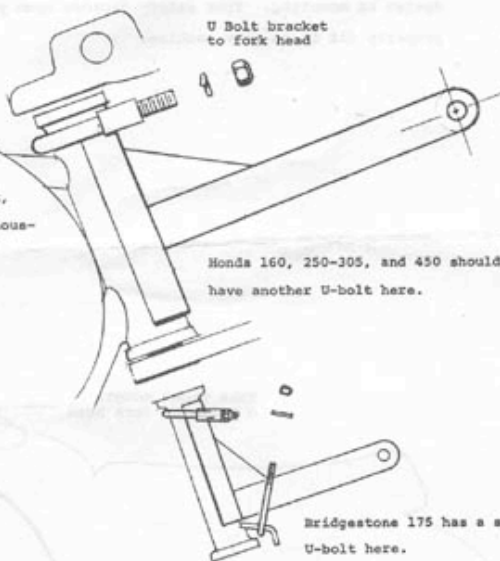
*This is not a necessity as the top clamp will provide sufficient strength*



1. Remove the headlight bulb and unbolt the headlight housing. Locate the upper yoke mount on the fork head. (The triangular web is on top of the bracket for all but the Honda 250-305)

## upper mount

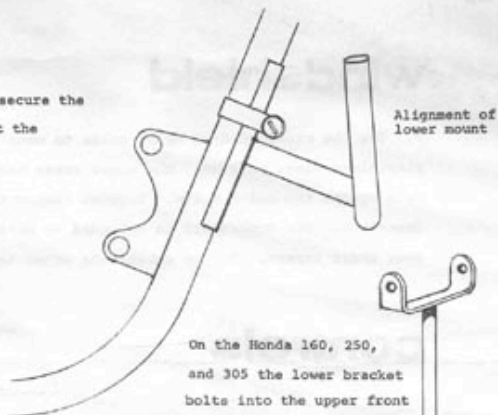
2. U-bolt the upper yoke to the steering head, align it, and tighten securely. On the Suzuki X-6, the headlight housing may be re-installed in the rear holes.



3. Twist the old headlight supports away from each other to clear the new mount. They should not hit the side of the gas tank.

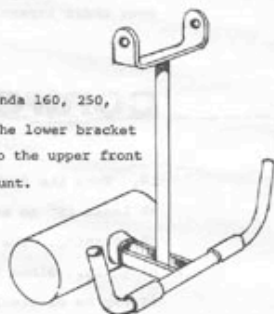
4: Use the provided hose clamps to loosely secure the lower mount to the down tubes. Be sure that the neoprene pads are in place.

## lower mount

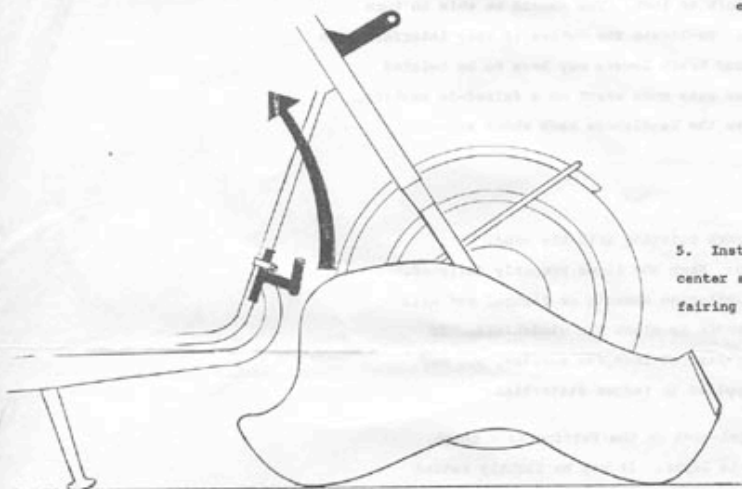


Alignment of lower mount

On the Honda 160, 250, and 305 the lower bracket bolts into the upper front engine mount.



5. Install the fairing. With the machine on its center stand, lift the front wheel and slide the fairing under the tire.



6. Lift the fairing into place so that the upper bracket arms are within the headlight opening.

Fit the headlight bolts thru the fairing and into the upper brackets.

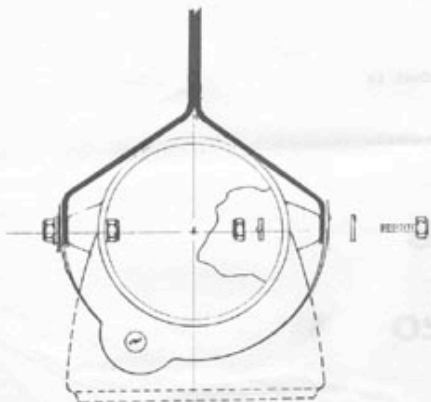
Swing the fairing up to rest upon the lower mount.

Pull the lower bracket up until it supports the fairing and tighten.

7. Hook the two bungee cords into the holes at the bottom of the shell. Stretch them back and hook them to some convenient point.

*on Honda 305  
The upper bracket  
arms are on the  
outside of the  
fiberglass shell*

## headlight



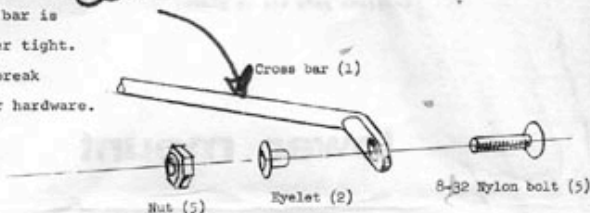
8. Install the headlight; tighten all bolts. On the Suzuki X-6 fairing, spacers are needed on either side between the shell and the bracket.

*X-6  
Place 7-washers  
or any  
convenient  
3/8" spacer*

## windshield

9. Use the provided 8-32 nylon bolts to mount the plexiglass clear portion. The upper cross bar is held by the two outer bolts. Tighten finger tight. Important: The Windshield is intended to break away under impact. Do not substitute other hardware.

*delete*



## controls

10. Turn the forks from lock to lock. You should be able to turn at least 25° to each side. Re-locate the cables if they interfere with the turning. The clutch and brake levers may have to be twisted slightly. Since the driver sits more erect on a faired-in machine, it may be desirable to move the handlebars back about an inch.

### Some notes:

**Parking:** Always park pointing into the wind.

**High speed driving:** Keep the tires properly inflated.

**Windshield:** Use imitation chamois or flannel and mild detergent to clean the windshield. If scratches get into the surface, wax may be applied to reduce distortion.

**Fiberglass.** The gel-coat on the fairing is a tough, durable layer. It may be lightly sanded with #600 wet-or-dry, rubbed out with compound, and waxed. If the shell is to be painted, the surface needs only to be sanded lightly. The finish color may be sprayed directly.

### Replacement parts:

Windshield and five nylon screws: Cost is \$13.00, COD.

Hardware and shell: Prices upon request.



**vetter design works**  
p.o. box 3014  
country fair station  
champaign, ill. 61820  
u.s.a.